

S-6200 Nozzle cleaning machine



S-6200 using the hydrodynamic water fragmentation, producing very fine water mist, with the speed of sound ($V = 360\text{m/s}$) to form a strong momentum jet to the nozzle, nozzle for cleaning at the top of the formation of a continuous field, crushing the internal surface of the dirt (the nozzle will not be damaged because of its independent device), during the cleaning process the used cleaning water (deionized water or distilled water) automatic direct emissions.

Cleaning Principle:

Withit special mechanical design, S-6200 using the hydrodynamic water fragmentation, producing very fine water mist, with the speed of sound ($V = 360\text{m/s}$) to form a strong momentum jet to the nozzle, nozzle for cleaning at the top of the formation of a continuous field, crushing the internal surface of the dirt (the nozzle will not be damaged because of its independent device), during the cleaning process the used cleaning water (deionized water or distilled water) automatic direct emissions.

Functions:

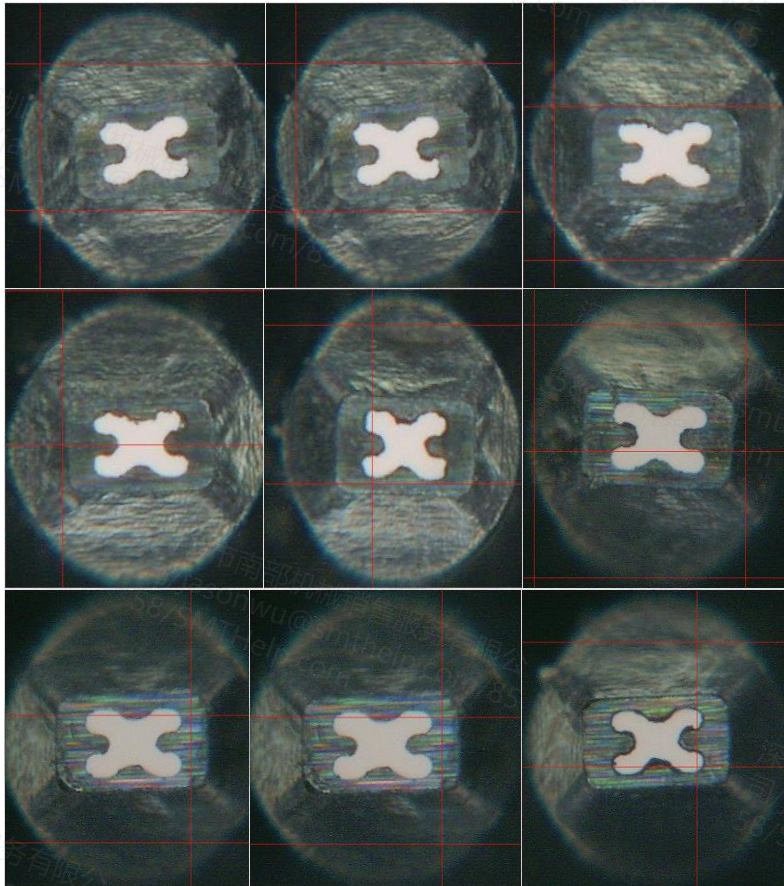
1. Thoroughly clean the dirt on nozzles which ultrasonic cleaner can not clean.
2. Strong clean power for nozzles ,even the smallest nozzle hole.
3. Very good cleaning effectiveness, extend lifespan of the nozzles.
4. No damage to the coating layer of the nozzle and its reflector panel.
5. Only use DI water or distilled water .
6. Auto clean and dry.
7. Easy operation.
8. Right for all kind of mounter nozzles .

Cleaning result compare with Ultrasonic cleaner



Cleaning result compare with Ultrasonic cleaner

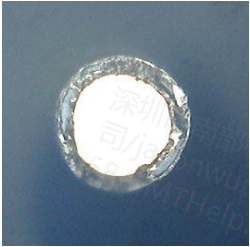
S-6200 cleaner
Panasonic225 after cleaning









Japan cleaner
Panasonic225 after cleaning



SCM24 description
cleaning result A

clean time	nozzle type	before clean	after clean	Remarks
60s	110Snozzle			normal dirt nozzles,when pressure is about 0.5Mpa. 1st time clean about 1 minute;2nd time clean time reduce to 90s
				
				

cleaning result B

clean time	nozzle type	before cleaning	after cleaning	remarks
90s	225 nozzle			normal dirt nozzles,when pressure is about 0.5Mpa. 1st time clean about 2 minute;2nd time clean time reduce to 90s
				
				

ITEM	S-6200 SPEC
Air supply	0.5~0.7Mpa
Power supply	AC220V,1A
Clean liquid	Purified water or DI water
Clean time	3~6min
Dry time	1~3min
Spray pressure	≤0.55Mpa
Clean liquid consumption	≤150cc/Hour
Nozzle range	Min01005~Max hole diameter \varnothing 2.0mm
Jig spec	24holes
Machine size	L665*W555*H475(mm)
Machine weight	30KG

Other cleaning Machine



**Mobilephone
camera module
cleaning
machine**



**IC Tray auto cleaning
machine**

PCB Bare board cleaner



Adhesive rolling cleaner



Brush+vacuum cleaner



**PCB surface Cleaner
Composite type**

SMT Cleaning Machine



SCM800
Electric stencil
cleaning machine



S-1688
Pneumatic stencil
cleaning machine



SCM5200
Wave oven fixture
cleaning machine



SCM55600D Offline
PCBA cleaning
machine



SCM6200 Nozzle
cleaning machine



SCM220 Oline PCBA
cleaning machine



S-6200 Nozzle
cleaning machine

Mis-print PCB cleaning machine, Squeegee cleaning machine, reflow over cleaning machine...

Screen printing cleaning machine—PCB, LCD, TP, film printing



**SCM3100 Screen
cleaning machine**



**SCM4100 Screen developing
and stripping machine**



**SCM5100 Squeegee
cleaning machine**

Best After-sales service

- **Worldwide Support**
- **Free Installation/ Training**
- **1 day lead-time (spare parts)**
- **1 Month customize solution**



Welcome inquiry

- 1, Please visit : www.smthelp.com
- 2, Find us more: <https://www.facebook.com/autoinsertion>
- 3, Know more our team: <https://cn.linkedin.com/in/smtsupplier>
- 4, Welcome to our factory in Shenzhen China
- 5, Google: Auto+Insertion
- 6, See machine working video: youtube - Auto Insertion
- 7, Looking forward to your email: jasonwu@smthelp.com